



## Group Accommodation

### Information Pack

Urban Central Accommodation, Melbourne

334 City Road, SOUTHBANK VIC 3006 ph:03 9693 3700 fax:03 9682 7554 email:groups@urbancentral.com.au



## Welcome to Urban Central Accommodation

Our focus is to enhance our guests' experience of Melbourne. Urban Central is all about ease. We offer quality hotel style service for a budget price in a relaxed atmosphere. We pride ourselves on our friendly service and our secure, clean environment.

Our facilities cater for groups from 12 to 150 guests, with multiple styles of accommodation available.

Our central location is within walking distance to the CBD and many other major landmarks within Melbourne such as the Melbourne Sports & Aquatic Centre, Federation Square, Victorian Arts Centre, Melbourne Aquarium, Docklands, Eureka Sky Deck, Etihad Stadium, Crown Entertainment Complex and Melbourne Exhibition and Convention Centre. Southern Cross station is an easy 10 minute walk and there is a tram and a bus stop directly outside the building. Mini-bus/car parking is free of charge and coach parking is a 5 minute walk away.

### The Facilities

Urban Central offers a wide range of facilities offered for group reservations that include:

- Room types available are – 4 bed share dorms, Double Ensuite Rooms and Quad Ensuite Rooms.
- Free continental breakfast for all guests
- Free tea and coffee
- Free weekly sausage sizzle
- Free linen and towels
- Free rice and pasta for cooking
- Reception staffed 24 hours a day
- Wheelchair access
- Personal lockers in all Dorm Rooms
- Room key cards for security
- Tour desk through Adventure Travel Bugs agency
- Internet café and wireless access
- Car parking
- TV Lounges
- Laundry Facilities
- Communal self catering kitchen
- Communal dining room

## The Accommodation

- Urban Central offers 4 bed share dorms, Double rooms with Ensuite and Quad rooms with Ensuite
- All bedding is provided (doonas, bottom sheet and pillow)
- Towels are provided
- Bathroom facilities are situated on each floor for guests in shared dorms
- Please note that due to the layout of the venue, groups may be located on different floors
- Check in is from 2pm. Guest bag storage is available before this time on request
- Check out is before 10am. Guest bag storage is available after this time on request

### Continental Breakfast

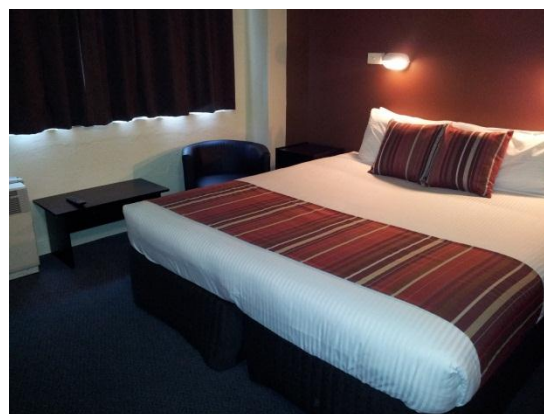
Assorted cereals, milk, bread, butter, jams, juice, tea and coffee are provided free for all guests of Urban Central.

### The Rooms

#### 4 Bed Share Dorm



#### Double Room with Ensuite



#### Quad Room with Ensuite



#### Shared Bathroom



### Catering

The groups department can organise lunch packs and or dinner at local food venues, so feel free to contact us if you would like us to help you with any of your catering requirements.

## How to reach Urban Central Accommodation

### By Car

Urban Central is easily accessible from most freeways from the North, East, West and South. Remember to purchase a Citilink Pass before you travel. Call 132629.

Urban Central offers free parking for guests of a group booking. Car spaces are limited and must be booked in advance. We only offer parking for Cars and Mini Buses.

### From Tullamarine Airport

(Melbourne International)

Skybus can be caught outside any terminal. Purchase tickets on board \$17 one way, \$28 return. Trip time to Southern Cross Station approx 20 minutes. Transfer to Skybus hotel shuttle for Urban Central (operates only during the day), or walk to the main station entrance and catch tram 112 on Collins St (in front of Krispy Kreme Donuts), heading to St Kilda Fitzroy Street. Get off at the 5th stop, 126, at City Rd, in front of McDonalds. Urban Central is across the road from McDonalds.

A Taxi from Tullamarine Airport will cost approximately \$65-70

### From Avalon Airport:

You can get the Sunbus Shuttle into Southern Cross Station in Melbourne City.

### From Southern Cross Station on a tram

Walk onto the street you will be on the corner Spencer and Collin's Streets. Heading south get on Tram Number 112 to St Kilda. After a few minutes you will pass Crown Casino on your left followed by a set of traffic lights. When you see a green and yellow 'BP' Petrol Station on your right ring the tram bell to get off at the next stop (Get off at stop 126). You will get off just after the traffic lights (City Road). We are the grey building across the road from McDonalds.

### From Southern Cross Station walking

Walk onto the street you will be on the corner Spencer and Collin's Streets. Walk right down Spencer street which will take you over the river and after a few minutes you will pass Crown Casino on your left followed by a set of traffic lights. Keep walking past the lights and you will soon see a green and yellow 'BP' Petrol Station, we are next to that on City Road.

### Taxi from Southern Cross

Taxis go from outside the station often. It will cost you about \$10 for a taxi to Urban Central.